

## Welcome!

Our Fall 2016 issue features **over 160 professional and personal updates from Rossier alumni**. If you would like to submit an update for the Spring 2017 issue, [click here](#).

### Fight On!

Matt DeGrushe ME '04  
Director of Alumni Engagement



## In This Issue

### Featured Stories

- 2016 USC Rossier/DSAG Leadership Conference page 2
- Marcia Sidney-Reed '78 MS '81** Named 2016 National Distinguished Principal page 3
- Kimberly White-Smith EdD '04** Named Dean at the University of La Verne's LaFetra College of Education page 5
- Stefanie Phillips EdD '05** Named Superintendent of the Santa Ana Unified School District page 6
- USC Alumni Association Awards page 7
- Joshua Arnold EdD '13** Named Superintendent of Culver City Unified School District page 11
- Constance Iloh PhD '15**, invited panelist at AERA 2016 Presidential Session page 13
- AERA Names **Jenna Sablan PhD '15** as first-ever Congressional Fellow page 14
- Rossier on The Road – Hawaii, Dallas & San Francisco page 20
- In Memorium page 21

### Event Recaps & Photos



2016 Leadership Conference



Rossier on the Road Receptions – Hawaii, Dallas and San Francisco

## Challenges faced by women in school leadership discussed in 2016 Leadership Conference panel

The Rossier School of Education and the Dean’s Superintendents Advisory Group hosted its annual Leadership Conference on July 21 at the Radisson. A panel discussion of distinguished women leaders including Michelle King, LAUSD superintendent, Reveta Bowers, former head of school, Center for Early Education and Karen Symms Gallagher, dean of the USC Rossier School of Education opened this year’s conference, which brought together education leaders from all parts of the USC Rossier community. For a more detailed summary of “Women In Leadership: A View from the Top”, including a video from the event, please [visit this link](#).

The standing-room only workshops sustained the passion and enthusiasm of the opening session. One workshop focused on issues facing education in “What Keeps You Up At Night: Critical Issues Facing Educational Leadership”. Another workshop was titled “Edupreneurship—Turning Ideas Into Action”. Lastly, a number of workshops focused on career advancement: “Putting Your Best Foot Forward—Successful Job Search Strategies”, “Diverse Pathways in Educational Leadership”, “Pathways to Superintendent or CMO Leadership”, “Pathways to Higher Education Leadership”, and “Pathways to School Site or District Leadership.”

You can view pictures of the event on [USC Rossier’s Flickr](#). See the Twitter feed under the hashtag [#USCEdConf](#).



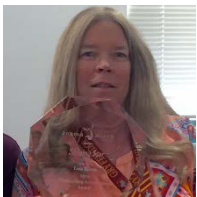
## 1950s

**Carol Goshaw Blanchard** *BS '54 MS '78* was awarded the Widney Alumni House Award in recognition of loyalty, support and dedication to USC. Carol taught first grade and orchestra in LAUSD at Bellagio Road for 5 ½ years, and substituted in the Newport Mesa and Santa Ana Unified school districts. She taught several subjects at SIAS International University in Xinzheng, China, for seven years and at Education Services Exchange in China for Chinese teachers sponsored by Peking University in Beijing until 2012. Carol is the founder of the Trojan Guild of Orange County and serves on the USC Orange County Regional Board.

## 1960s

**Naomie Curry-Webb** *BS '69 MS '70* is celebrating 25 years as the owner and CEO of Windsor Hills Christian Book Center, serving the Los Angeles community and surrounding areas.

## 1970s



**Lois Booth** *BS '71 MS '76* is the senior director of educational services at Junior Blind of America, where she supervises and administers the operation of a non-public special education school for multi-disabled youth. Lois acts as the school liaison for foster youth and their school. She negotiates rates with contracted school districts and directs the operation of a non-public agency that provides related services to contracted schools and districts. She also supervises the operations of five group homes for developmentally disabled children and adults.

**Ronald P. Hudson** *MS '75* retired from Kings Canyon Unified School District as the deputy superintendent in 2012. He immediately accepted administrative duties as the director of development at Immanuel Schools in Reedley, Calif., where he is currently directing the largest ever capital campaign for the K-12 school.

**Deborah Lewis** *BS '78* is a recertification coordinator for California Mentor. She trains and certifies mentor homes and teaches CPR and first aid.

## Marcia Sidney-Reed '78 MS '81 Named 2016 National Distinguished Principal



Marcia Sidney-Reed '78 MS '81, principal of 186th Street Elementary School in Los Angeles Unified, was honored in October as a 2016 National Distinguished Principal by the National Association of Elementary School Principals. The association recognizes one outstanding principal in each of the 50 states each year. Now in her 13th year as principal, Sideny-Reed was selected by her fellow principals statewide, in part for the academic improvements at her K-5 school.

## 1980s

**Suzanne Roepke** *MS '89 PhD '95* is an educational psychologist for the Calaveras County Office of Education in Angels Camp, Calif.

## 1990s

**Christopher Hall EdD '94** retired as a faculty member at Texas State University in San Marcos, Texas, last year.



**Raina Krell MS '95 PhD '05** has recently opened Westlake Village Therapists, a private practice group offering psychotherapy and psychological consultation services to individuals, couples and families. The group specializes in couples' work and relationship enhancement, including premarital counseling, conflict resolution, divorce support and skill building for effective co-parenting.

**Matt Nelson PhD '95** is the dean for the College of Social and Behavioral Sciences at Northwest University in Kirkland, Wash. He provides senior leadership over all faculty, staff and academic functions associated with the college. These responsibilities include program and curriculum development, program assessment, budget development and management, faculty and staff development, promotion and marketing of the college and other academic administrative duties.



**Sheldon K. Smith EdD '98** oversees the fiscal health of 10 school districts within San Luis Obispo County as an assistant superintendent in the San Luis Obispo County Office of Education.

**Ernest Zarra PhD '99** recently published several books, including: *Teacher-Student Relationships: Crossing into the Emotional, Physical and Sexual Realms* (Rowman & Littlefield, 2013); *The Wrong Direction for Today's Schools: The Impact of Common Core on American Education* (Rowman & Littlefield, 2015); and *Common Sense Education: From Common Core to ESSA and Beyond* (Rowman & Littlefield, 2016). He also has several books scheduled for future publication, including: *Helping Parents Understand the Minds and Hearts of Generation-Z* (Rowman & Littlefield, 2017) and *The Entitled Generation: Helping Teachers Teach and Reach the Minds and Hearts of Generation-Z Students* (Rowman & Littlefield, 2017). The following article was recently published in the summer 2016 issue of the

*Journal of the Center of Leadership Equity And Research: "Addressing Appropriate and Inappropriate Teacher-Student Relationships: A Secondary Education Professional Development Model."*

## 2000s

**Adam Almeida BS '00** is principal at PUC Lakeview Charter High School in Sylmar, Calif.

**Francisco Ramos PhD '00** is a professor at Loyola Marymount University. He also serves as director of the III International Colloquium on Languages, Cultures, Identity in School and Society, to be held in Soria, Spain, July 5-7, 2017, and organized by the Loyola Marymount University School of Education.



**William Rich EdD '00** co-authored a cross-disciplinary book with colleagues from California State University-Chico in the Department of Sociology. The book, *Prison Vocational Education and Policy in the United States: A Critical Perspective on Evidence-Based Reform*, explores California's prison system in the context of vocational education reform.

**Derrick Chau PhD '02** is the senior executive director of instruction at the Los Angeles Unified School District.



**Kathryn A. Short EdD '01** is a professor in the School of Education and program director for early childhood studies at California Baptist University. She was recently named the 2016 Board of Trustees

Distinguished Scholar. Her research study is titled "An Examination of the Effect of the Use of NAO, a Humanoid Robot, as a Communication Tool for Preschool Children Diagnosed with Autism Spectrum Disorder (ASD)."

**Jan Serrantino-Cox EdD '02** wrote "Clinical Accommodations: The Who, What, When, Where and Why," which appeared in the September 2016 issue of *Disability Compliance for Higher Education*. She also co-authored a chapter, "Accommodations in the Didactic and Clinical Setting," in *The Guide to Assisting Students*

*with Disabilities: Equal Access in Health Science and Professional Education.*

**Antonette Araya** BS '03 MS '05 is a teacher at Anatola Avenue Elementary School in the Los Angeles Unified School District.



**Heather Brunold** ME '04 EdD '15 served as the executive director of TEDxPasadenaWomen over the past year, where she oversaw a team of 30 to bring TED speakers from all over the globe to the Huntington Library.

Art Collections, and Botanical Gardens in October. The conference was attended by more than 400 community activists and hosted 20 community organizations in the interactive and social spaces. Over \$80,000 was raised to produce the event, and a portion of the proceeds was donated to support The Why? Foundation, a cancer-fighting organization, in conjunction with Breast Cancer Awareness Month.

**Derenda King** EdD '04 worked in higher education for nearly 20 years in both academic and student affairs. She is currently a financial advisor serving clients in the West Los Angeles and South Bay communities. She never thought she would leave a career in higher education, especially after earning her doctorate. However, her interest in the financial services industry began in 2007, and she now provides financial planning, wealth and risk management services to help clients pursue their financial goals. An educator at heart, she is passionate about empowering and equipping clients with the knowledge to make educated choices about their money.



Looking for real-time updates on Rossier alumni? Follow us on Twitter [@RossierAlumni](https://twitter.com/RossierAlumni)

## Kimberly White-Smith EdD '04 Named Dean at the University of La Verne's LaFetra College of Education



The University of La Verne announced Kimberly A. White-Smith EdD '04 as the newly-appointed dean of the recently named LaFetra College of Education.

"We are honored to welcome Dr. White-Smith to the University of La Verne community," said President Devorah Lieberman. "Her exceptional academic credentials make her the ideal choice to lead the LaFetra College of Education. Dean White-Smith will continue to further the University of La Verne's expertise in the field of education and our 125-year heritage of preparing highly qualified and exemplary teachers. We are especially proud of our teachers' and educators' success in serving traditionally under-resourced schools and communities."

Kimberly most recently served as associate dean of the College of Educational Studies and director of the Donna Ford Attallah Educator Development Academy at Chapman University in Orange, Calif. Her tenure at Chapman University, beginning in 2004, included increasingly responsible administrative positions within the College of Educational Studies, where she was also a professor of education.

Raised in Inglewood, Calif., Kimberly was a first-generation college graduate. She is the author of numerous scholarly articles on teaching and learning, and among other professional organizations, she is a member of the American Educational Research Association and the American Association of Colleges for Teacher Education. In 2015, she was awarded the Martin Luther King Legacy Award from Chapman University.

**Greg Misiaszek MS '05** is an assistant professor at Beijing Normal University (BNU). He and his wife, Lauren Ila Misiaszek, became the first full-time faculty members at a normal school in China. After graduating with his master's from Rossier in 2005, he continued with a PhD at UCLA in comparative and international education. In addition to being part of the faculty in the Theories of Education institute at BNU, he also holds the positions of director of communication and board member of the Executive Educational Publications Committee of the World Council of Comparative Education Societies (WCCES); assistant director of the Paulo Freire Institute, UCLA; and an International Advisory Committee Member of the UNESCO Chair on Global Learning and Global Citizenship Education (GCE). His current work in these positions focus on utilizing critical theories in analyzing environmental education (i.e., ecopedagogy), globalization and education, GCE, race, gender, feminism, indigenous knowledges and media (i.e., public pedagogies). He is author of the forthcoming book *Educating the Global Environmental Citizen: Understanding Ecopedagogy in Local and Global Contexts* (Routledge Press). He has worked internationally with UNESCO on GCE and ecopedagogy, as well as being invited internationally to teach and to give numerous lectures on his research. Before working at BNU, Greg worked for over 17 years at USC's Andrus Gerontology Center and as an adjunct professor at UCLA, University of San Francisco and California State University-Long Beach.

**Jacqueline Perez EdD '05** is the assistant superintendent of educational services at Glendale Unified School District in California.

**Sarah Peyre ME '05 EdD '08** is the assistant dean for interprofessional education and director of the Institute for Innovative Education at the University of Rochester Medical Center.

## Stefanie Phillips EdD '05 Named Superintendent of the Santa Ana Unified School District



As superintendent of the Santa Ana Unified School District, Stefanie Phillips EdD '05 will be responsible for leading Orange County's largest school district and the seventh-largest district in the state. She brings 16 years of experience in educational leadership, including three years as the district's deputy superintendent of business and operations.

"I am very excited about the opportunity to serve the Santa Ana Unified School District family as the superintendent of schools," she said. "As our parents, teachers, staff and community continue to work together to increase student learning, my team and I will focus on engaging the community, increasing communication and connecting all of our stakeholders with the programs and supports that will assist us in ensuring each and every student in Santa Ana Unified reaches their highest potential."

Before joining Santa Ana Unified in 2013, Phillips served as deputy superintendent for both the Clayton County School District in Jonesboro, Ga., where she had direct oversight for the academic, human resources, operations and finance divisions, and the Chino Valley Unified School District. She also served as an assistant superintendent at Ontario-Montclair School District.

Santa Ana school board President John Palacio said Phillips stood out among the candidates vetted. "In addition to knowing the district, she brings a wealth of experience that will be invaluable as the district continues to move forward in increasing student academic achievement and opportunities," he said. "As the district's chief financial officer, her strong stewardship afforded the district with an opportunity to have a fiscally balanced and prudent budget while providing our employees and students with the resources they needed."

## Rossier Alumni Receive Alumni Awards at Fall Recognition Events

This Fall, the USC Alumni Association honored outstanding Trojan alumni at two annual events and Rossier alumni were well represented among the honorees at both events.

At the Volunteer Recognition Dinner held on September 29, **Kate Sullivan Farlow '66** was one of six President's Award recipients. **Carol Goshaw Blanchard '54 MS '78**, **David Cash EdD '08** and **Pamela Connor '78** each received a Widney Alumni House Award.

At the Half Century Trojans Hall of Fame Luncheon held on October 18, **Roger Rossier MA '63 EdD '72** received a Hall of Fame Award and **Sue Corwin Schaar '56** received the Distinguished Service Award.



**Kate Sullivan Farlow '66**



**Carol Goshaw Blanchard '54 MS '78**



**David Cash EdD '08**



**Pamela Connor '78**



**Roger Rossier MA '63 EdD '72**



**Sue Corwin Schaar '56**

**Elizabeth Swift EdD '06** retired in 2010 and was elected to the city council of Buena Park that year. In 2013, Elizabeth served as the mayor. Reelected in 2014, she is currently mayor pro tem and will rotate in as mayor again in December. Elizabeth represents Buena Park on the Orange County Fire Authority Board of Directors, where she is currently the vice chair and will become the chair in January. She had been married for 46 years to Greg Swift, and they have four daughters and 13 grandchildren.



**Rocke DeMark ME '08 EdD '11** is the assistant dean of student and academic affairs at the School of Pharmacy at Chapman University. He was promoted from his previous role as the director of student affairs.

**Shirin Houshang Razi ME '08** is the associate director for the Master of Science in Marketing program at the USC Marshall School of Business.

**Veronica Corona Popovic ME '09** is a scholarship coordinator in the financial aid and scholarship department at California State University-Northridge. Her department recently won the institution award for National Scholarship Provider of the Year from the National Scholarship Providers Association.

**Melissa Lox MFT '09** is the president of Healthy Active Lifestyle Coaching, which strives to empower their clients to be the best versions of themselves and support their communities in upleveling their nutrition, fitness and mindset to accomplish any health and fitness goal.

**Diane Shammas EdD '09** published two articles in 2015: "We Are Not All the Same: Arab and Muslim Students Forging Their Own Campus Communities in a Post-9/11 America," *Journal of Muslim Minority Affairs*, vol. 35, no. 1; "Underreporting Discrimination Among Arab American and Muslim American Community College Students: Using Focus Groups to Unravel the Ambiguities Within the Survey Data," *Journal of Mixed Methods Research*, published online before print Aug. 13, 2015, doi: 10.1177/1558689815599467. The last three years, Diane traveled globally at international peace research education conferences, IPRA (International Peace Research Conference, 2014, Istanbul), IAACS

(International Association of Advancement of Curriculum Studies, University of Ottawa), and "Siege and Anger in Gaza: Personal Resilience Makes You Less Angry, but Is it a Buffer Against the Cumulative Effects of the Siege on Anger?" at Gaza Community Mental Health Programme 6th annual conference on resilience and social justice. Diane is currently working on two manuscripts for publication, "Asian Immigrants, Identity Development and College Transition" and "Black Lives Matter, American Indian Movement and Palestinian University Students' Popular and Nonviolent Movements." Although she taught at USC in the American Ethnicity and Studies Department and at Al Azhar University, Gaza, American Corner (American Cultural Studies), since her mother passed away on March 19, 2014, she has been very busy managing the estate, family car dealerships and commercial real estate, "putting to good use my previous corporate business and entrepreneurial experience (before returning to academia I was an apparel retailer and wholesaler in footwear for 20 years). My cup runneth over."

**Edward Trimis EdD '09** long-time LAUSD educator and administrator, past member of the Association of California School Administrators State Board of Directors (2013-16), and adjunct professor at USC Rossier, started in a new position this year as principal of Visual and Performing Arts High School in South Gate, Calif., after completing five years as principal of Verdugo Hills High School.

## 2010s

**June Ahn PhD '10** is an associate professor of learning sciences and technology at New York University. He is working in the Educational Communication and Technology program within the Department of Administration, Leadership and Technology at the Steinhardt School of Culture, Education and Human Development.

**Grant Burlew ME '10** is the associate director for residential education at USC.





**Laura Castaneda** *Edd '10* is one of eight members of the Association for Education in Journalism and Mass Communication (AEJMC) that has been selected to participate in the 2016–17 class of AEJMC's Institute for

Diverse Leadership in Journalism and Communication. The institute is designed for people of color and women who are interested in academic leadership opportunities. She is currently a professor of professional practice at USC's Annenberg School of Journalism.

**Malinalli Cooke** *MAT '10* teaches chemistry and honors chemistry at Diamond Bar High School and also serves as the head cross country coach.

**Ryan Corner** *Edd '10* is vice chancellor for educational programs and institutional effectiveness for the Los Angeles Community College District. As vice chancellor, Ryan oversees districtwide elements of curriculum, attendance accounting, student support services, research, accreditation and the development of the district strategic plan.

**Liselda Fabian** *ME '10* is the associate director of internships and experiential learning at Emerson College, Los Angeles Center.



**Gus Frias** *BA '79 MPA '83 Edd '10* received the 2016 Meeting The Challenge Award from the FBI's InfraGard National Members' Alliance. This award recognizes his work in developing protective measures

against violence and terrorism at K-12 schools. Gus serves as the education sector chief for InfraGard Los Angeles.

**Darlene Grover** *MAT '10* is the English department chair at the Westmark School in Encino, Calif. The Westmark School is a private high school for students with language-based learning differences in grades 2–12.



**Benjamin Quiñones Jr.** *MAT '10* is a bilingual educator and adviser for player development for the Los Angeles Dodgers. His job responsibilities include teaching English as a second language in

addition to providing lessons on basic life skills in Spanish. His goal is to help the young men acclimate to their new environment linguistically as well as socially.

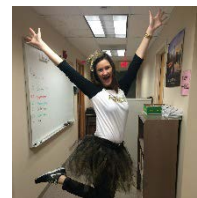
**Dawn Santiago** *MAT '10* is a math teacher at Hueneme High School in Oxnard, Calif.



**Maryann Tolano-Leveque** *Edd '10* was named the dean of students at Citrus College. Her areas of responsibility include the development, supervision and evaluation of the student life office, student health center, veterans

success center, leadership development programs, student government operations and student conduct. She is the primary adviser to the Associated Students of Citrus College and responsible for programs encompassing a combined budget of more than \$5 million.

**Justin Vance** *Edd '10* is interim department chair of culture, history and politics at College of Western Idaho in Meridian, Idaho.



**Melissa Gillespie** *ME '11* is a school counselor at Calabasas High School.

**Darin Gray** *MAT '11* is director of STEM education outreach programs at the USC Viterbi School of Engineering. His role is to help increase the number of underrepresented and educationally disadvantaged students who attend college and major in science, technology, engineering and mathematics (STEM).

**Amber Hroch** *ME '11* is a research analyst at Long Beach City College.

**Anthony Ikehara** *MAT '11* is a secondary teacher at Chinle Junior High School in Chinle, Ariz. He is currently teaching seventh grade language arts.

**Amy Jones** *ME '11* is a special education teacher at Detroit Premier Academy in Michigan.

**Allison Markus** *MFT '11* is director of clinical services at KLEAN Treatment Centers in West Hollywood, Calif.

**Cameron McMullen** *MAT '11* earned his PhD in Educational Leadership from the University of Nevada in May 2016.



**Gerald Mitchell** *Edd '11* is the associate dean of the University College at Fayetteville State University in Fayetteville, N.C. He is responsible for academic support resources, including the mathematics lab, the writing center and supplemental instruction that facilitate the successful transition of first-year students into the university and subsequent retention into the second year.



**Virginia Richard** *MFT '11* started the PhD program in clinical psychology at Fuller Theological Seminary this fall.

**David M Rochman** *MAT '11* is a program specialist for evaluation and assessment for the Orange County Department of Education.



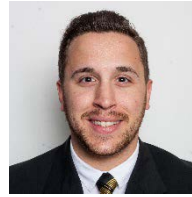
**Celena Alcalá** *Edd '12* married Christian Burkhardt on July 29, 2016, at St. Monica Catholic Church in Santa Monica, Calif.



**Han Nee Chong** *Edd '12* and Nathan Carl Garrett welcomed Aisling Victoria Garrett, born on Jan. 5, 2016, in Honolulu, Hawaii.

**Jon Fitch** *MAT '12* is a teacher at Downtown College Prep El Primero High School in San Jose. He teaches AP U.S. history, government and economics.

**Cynthia Jines** *MAT '12* is a math teacher at Capital Christian Middle School in Sacramento, Calif. She is excited to say that her school qualifies to be a Blue Ribbon School this year.



**Bob Nolte** *ME '12* was promoted to be the assistant director of compliance, education for the University of Missouri athletic department.



**James Slagle** *ME '12* is the director of marketing for the University of Florida athletic department. He oversees the Gators' football marketing including development of strategic marketing campaigns and strategies related to the in-game experience at football games.




**Elise Smith** *ME '12* is an assistant director at the University of Texas-Dallas, where she manages student affairs programming for the business school honors program.



**Carolyn Stirling** *Edd '12* is the assistant vice president of enrollment at Claremont Graduate University in Claremont, Calif.

**Diana Villa** *ME '12* is a college access manager at KIPP LA Schools in California.

Join our group 

LinkedIn offers several groups for alumni to stay connected with the Rossier Family.

- [USC Rossier School of Education Group](#)
- [USC Rossier Network: Higher Education Administration](#)
- [USC Rossier Network: Higher Education Teaching & Research](#)
- [USC Rossier Network: K-12 Administration](#)
- [USC Rossier Network: K-12 Teaching](#)
- [USC Rossier Network: MET](#)
- [USC Rossier Network: TESOL](#)

## Joshua Arnold EdD '13 Named Superintendent of Culver City Unified School District



The Culver City Unified School District board approved the hiring of Joshua Arnold EdD '13 as the next superintendent for the district at the June 28 school board meeting after a comprehensive screening and interview process.

“We had a number of amazing candidates to choose from, and the board was unanimous in choosing Dr. Arnold,” school board President Steve Levin said. “He is a terrific, charismatic, leader who will lead [the district] in the right direction, deepening our commitment to the values and strategies that make this a great school district.”

Arnold had been serving as the assistant superintendent of educational services in the Los Alamitos Unified School District in Orange County.

Arnold is no stranger to this part of Southern California. He is a graduate of Beverly Hills High School and began his career in education as an English teacher in the Los Angeles Unified and Santa Monica-Malibu Unified school districts before becoming a school principal at Crenshaw Arts Tech Charter High and Los Alamitos High School. He also served as assistant principal at Fountain Valley High School, one of Orange County’s largest enrolled schools with more than 3,600 students.



**Daniel Diaz EdD '13** is the associate director of the UCLA History-Geography Project, one of the six sites of the California History-Social Science Project. It provides support to social studies teachers in Los Angeles via

workshops, seminars, summer institutes, coaching and curriculum development.

**Jeanette Jimenez MAT '13** is a social studies teacher currently teaching dual immersion world history, honors and AP European history in the Capistrano Unified School District. She is also working this year as an instructional coach to help identify the instructional

needs in the classroom and provide resources and collaboration opportunities for teachers to improve student learning.

**Tiffany Jones PhD '13** is director of higher education policy at Education Trust.



**Cecilia Pak Nesson EdD '13** is the primary talent development coach for Montgomery County Public Schools in Maryland.

**Thomas Studdert EdD '13** is the vice president of learning and development for DiscoverOrg in Vancouver, Wash. In this role, he oversees the team of individuals responsible for all training and development, both for internal employees and customers (over 37,000 individuals). This includes new hire orientation, customer onboarding, role-based learning and professional development.

**Kathy Thomas ME '13** is a coordinator of specialized programs at Campbell Union High School District in San Jose, Calif.



**Matthew Wong MAT '13** is a social science teacher at Arcadia High School, where he has taught for the past two years.

**Megan Workmon ME '13** is a senior student engagement coordinator at Arizona State University's Herberger Institute for Design and the Arts.



**Amber Bradley ME '14** is the new academic advisor for the USC Iovine and Young Academy.

**Yamonte Cooper EdD '14** was named 2016–17 president of the California Career Development Association. The California Career Development Association is dedicated to the advancement and professional development of career development specialists within the State of California.

**Laura Garcia** *ME '14* is a First Year Success Center counselor and coordinator at Rio Hondo College. She currently oversees the center, where she runs specialized programming and counseling for first-year students.



**Dieuwertje "DJ" Kast** *MAT '14* received the Forbes "30 under 30 in Science" and the North American Association for Environmental Education's "EE 30 under 30" for the work she has done for the USC Joint Educational Project's STEM Programs. She was also selected as a science communicator for the Ocean Exploration Trust and helped translate the deep sea research occurring on the Nautilus. Furthermore, DJ was also selected as a PolarTREC teacher and traveled to the Arctic with a polar scientist to learn how to bring those ideas to the students she serves here in Los Angeles through the USC Joint Educational Project and the USC Neighborhood Academic Initiative.

**Sharan Kaur** *MAT '14* is a first grade teacher in the San Juan Unified School District in Carmichael, Calif. She teaches shared reading, guided reading, phonics, math, writer's workshop, next generation science using the EEI Units (Environment and Education Initiative) and hands on experiments. She also imbeds social studies and arts into various content areas to meet the needs of her students.

**AyEsha Leonard McLaughlin** *ME '14* is director of equity and school climate for ICEF Public Schools. She supports nine schools in the charter organization with culture, climate, behavior supports and ensuring equitable access to education for all students.



**Melissa Moore** *EdD '14* is the superintendent of El Segundo Unified School District (ESUSD). Her district was recently accepted into the National Network of Innovative School Districts. ESUSD joins Digital Promise

League of Innovative Schools and will partner with other leading educators, entrepreneurs, and researchers from across the country. ESUSD was selected from a competitive and national pool of applicants based on its leadership, evidence of results, innovative vision for learning and commitment to collaboration. ESUSD is on

a journey to create innovative learning experiences that help students develop learner attributes necessary to be successful in careers of the future. The integration of science, technology, engineering, art and mathematics (STEAM) curriculum for all students in kindergarten through 12th grade serves as one example that clearly prepares students for careers of the future. In addition, ESUSD utilizes iPads through its 1:1 Individualized Technology Initiative for students in grades 6-12 to integrate educational technology and blended learning opportunities that align with rigorous standards. The League of Innovative Schools, launched in late 2011, accepts new members through an open application process once per year. With the new members, the League now includes 87 school districts in 33 states, representing nearly 3.3 million students.



**Mary Anna Noveck** *EdD '14* joined the imagine1day USA Foundation Board of Directors in 2015. The international nonprofit was started in 2007 by husband and wife founders of Lululemon Athletica and has offices

located in Vancouver, Santa Monica and across Ethiopia. The nonprofit has identified educating children as a primary focus and recognizes the hardships that children face, especially in rural areas where they are needed for child labor, have long travel distances to schools and confront various cultural factors that make excelling in school difficult, especially for girls. Currently the organization partners with 487 schools across 10 districts in Ethiopia and has built 35 schools from the ground up. Mary Anna is leading a US initiative to raise \$150,000 to build a new primary school (grade 18) in the Filangur community, located in Ethiopia's Oromo region, to be completed in April 2017. Ethiopia is one of the poorest countries in the world and currently has over 2 million out-of-school children.

**Angela Pan** *ME '14* is a STEM and general counselor at Los Angeles Mission College.

**Dominica Patterson** *ME '14* is an advisor of disability services and programs at USC. She manages the notetaking accommodation process, conducts disability outreach, case management, documentation evaluation and collaboration with faculty and other staff.

**Adena Stepanosian** *MAT '14* is a sixth grade history teacher and intervention team (safe & civil) lead at Animo Phillis Wheatley Charter Middle School, part of Green Dot Public Schools.

**Jenny Weinman** *EdD '14* is executive director of global student experience at the University of Nottingham Ningbo China (UNNC).

**Michelle Woody** *EdD '14* is an assistant professor in the Biblical Counseling department at Dallas Theological Seminary (DTS). She has been recently named the director of the Master of Arts in Biblical Counseling degree program on the DTS-Washington, DC, campus in Manassas, Va. Michelle is also a licensed professional counselor (LPC) specializing in adolescents and family systems therapy.

**Geoffrey Zamarripa** *EdD '14* is a principal of Columbia School in the El Monte City School District, which enrolls 900 students from pre-K through eighth grade.

**Theresa Exum** *ME '15* is an athletic academic and career advisor at Washington State University.

## Constance Iloh PhD '15 Invited Panelist at AERA 2016 Presidential Session



Constance Iloh PhD '15 was an invited panelist for an American Educational Research Association (AERA) presidential session during the organization's 100th annual meeting in April. This presidential session titled, "Public Scholarship and #BlackLivesMatter: New Directions for Research and Policy, K Through College" was moderated by David Johns, executive director of the White House Initiative on Educational Excellence for African American. In addition to Iloh, the session included the following invited panelists: David O. Stovall (University of Illinois at Chicago), Prudence L. Carter (Stanford University), and Walter R. Allen (University of California, Los Angeles). The video for the session is available online YouTube via AERA at (<https://www.youtube.com/watch?v=qJvIWas3oeA>).

**Milo Jury** *EdD '15* is a teacher at Jordan School District in West Jordan, Utah.



**Caitlin Latta** *ME '15* is an assistant director of admission for Villanova University. She is in charge of all of Villanova's western recruitment and is based in Los Angeles. She is pictured here with Villanova's men's basketball, Jay Wright, and her admissions colleagues. She is thrilled to be back in Southern California and can't wait to hang out with fellow Trojans!

**Denise Macedo** *MAT '15* is a sixth grade teacher at Anaheim Elementary School District. She gently disrupts the status quo by sharing the culture of power, creating authentic and respectful relationships, taking a positive perspective toward students and their families and always doing what's best for each individual student. She works on closing the digital divide by giving students opportunities to be technological creators in innovative ways and does her best to create meaningful learning opportunities for her students. She also actively advocates for children who need additional support for receiving opportunity, equity and access in their schooling experience.



**Jill Richardson** *EdD '15* is the director of student affairs for the pharmaceutical sciences department at UC Irvine overseeing admissions, recruitment and advising.



**Ramiro Rublacaba** *EdD '15* is the assistant superintendent of human resources at Azusa Unified School District in Azusa, Calif.

**Shindale Seale** *MAT-TESOL '15* is an invited lecturer at Chapman University, where she conducts lectures on implicit bias, diversity and equity to incoming freshmen.



**Rona Smith** *ME '15* is celebrating almost a year in her current position as assistant dean of academic affairs for the USC Suzanne Dworak-Peck School of Social Work. She manages curriculum, faculty affairs and assessment matters. On a personal note, Rona is getting married in January!

**Merari Weber** *EdD '15* is an assistant professor and coordinator of ESL at Santa Ana College, School of Continuing Education. She is primarily responsible for the curriculum redesign of the academic ESL pathways, ESL life skills classes and assists with teacher professional development. The School of Continuing Education currently serves over 11,000 students and has over 135 ESL teachers working with students whose goals are to improve their English language skills to achieve better employment, progress to adult basic education classes, achieve a vocational degree or progress into the higher education classes offered at the community college.



### Are you interested in volunteering?

We are looking for alumni volunteers to help us with admissions activities, serve as guest speakers, review student resumes, conduct mock interviews and assist with student and alumni programming.

[Sign up online today!](#)

### AERA Names Jenna Sablan PhD '15 as first-ever Congressional Fellow



AERA has announced the selection of Jenna R. Sablan PhD '15 as the first-ever AERA Congressional Fellow. Sablan holds a research position at Loyola Marymount University. Her year-long appointment as a

Congressional Fellow commenced on Sept. 1. She will be working as staff to a congressional committee or on the personal staff of a member of Congress in Washington, D.C.

Sablan's work focuses on college access and readiness. Her research interests and expertise emphasize culturally relevant ways of understanding students' access to college.

"Dr. Sablan brings a strong background and commitment to using rigorous education research to inform education decision and policy making," said AERA Executive Director Felice J. Levine.

"The AERA Congressional Fellowship is a highly competitive offering for education researchers at early or later career stages," Levine said. "It provides them with an opportunity to learn about policy making on the ground and simultaneously bring their knowledge and expertise as an education scientist to education policy discussions on Capitol Hill."

AERA is partnering with the American Association for the Advancement of Science's Science and Technology Fellowship Program to provide this opportunity to AERA members. Sablan's fellowship year will begin with a comprehensive two-week orientation, after which she will decide among placement opportunities in congressional offices on Capitol Hill. Professional opportunities continue throughout the year through AERA activities and continued interaction with other Congressional Fellows from other fields.

## 2016 Rossier Commencement welcomes 600+ graduates to the Rossier Alumni Network



## CLASS OF 2016

**Kelly Altobelli EdD '16** is the GATE specialist for Glendale Unified School District. She coordinates and supports all things gifted and talented education, including district-wide events, identification, private schools, refugee grant, teacher specialists and school sites.



**Rebeca Andrade EdD '16** is an assistant director for Glendale Unified School District.

**Denise Barragan ME '16** is an undergraduate advisor for the UCLA Department of Spanish and Portuguese.

**Kyle Beattie MAT-TESOL '16** is a professor of English as a second language (ESL) at the College of the Redwoods teaching college level ESL and computer literacy courses to students who are struggling with their English. Students include first-year college students as well as recently arrived immigrants. Kyle helps them gain a strong grasp of the English language for use in their future studies and careers.

**Elizabeth Becker ME '16** is a Panhellenic support specialist at the National Panhellenic Conference in Indianapolis, Ind.

**Dustin Beech ME '16** is the assistant director for campus activities at Embry-Riddle Aeronautical University in Daytona Beach, Fla.

**Scott Binkley MAT '16** is an English teacher at Columbia River High School in Vancouver, Wash.

**Cristian Biviano ME '16** is a residence hall director for the University of Illinois at Urbana-Champaign.

**Carra Bloyd MAT '16** is a substitute teacher in various Oregon school districts including Scappoose, St. Helens and Rainer.

**Jill Bollinger Nowak MAT '16** is a teacher at Port of Los Angeles High School (POLAHS) in San Pedro, Calif. She teaches English and Honors English to ninth graders. POLAHS is a charter school that draws many students from the South Bay and provides education to college-bound students. Jill is happy to work with an amazing team of teachers and feels very fortunate to have the opportunities that this school provides.

**LaShae Bourgeois** *MAT '16* is working for Teach for America in Memphis, Tenn. She is teaching kindergarten at Aspire Coleman Elementary School.

**Patricia Brent-Sanco** *Edd '16* is director of equity for the Lynwood Unified School District.

**Crystle Brewster** *MAT '16* is working as a substitute teacher in Portland, Ore.



**Eric Canny** *Edd '16* is the vice president for program management at CEA Study Abroad. As a provider of study abroad services, CEA has built a reputation on an exceptional level of academic quality and student services at each of its worldwide locations. The vice president of program management is responsible for ensuring that all program sites function at a consistently high level across a wide range of geographies, cultures and program types. He also serves on the executive team for CEA and will be responsible for ensuring a steady two-way communication between program sites and the Phoenix headquarters. This communication will help CEA perform as a more connected organization where staff from around the world feel heard while also ensuring best practices are adopted across all locations.



**Alison Carlock** *ME '16* is a staff aide at the Center for International and Intercultural Programs at Golden West College. She performs international student advising and campus intercultural programming.

**Sarah Cella** *MFT '16* is a clinician at Hathaway-Sycamores in Pasadena, Calif. She works in a K-8 school-based therapist role, working with kid/teen populations struggling with anxiety, depression, trauma, ADHD and other emotional or disruptive symptoms or behaviors.



**Joseph Chan** *ME '16* is an admission advisor at Trident University International in Cypress, Calif.

**Suena Chang** *Edd '16* is an assistant principal in the Orange Unified School District. Her focus is on curriculum and instruction.

**Janice Chen** *Edd '16* is an assistant principal in the San Francisco Unified School District.

**Cecilia Chow** *MAT '16* is a biology teacher at Del Lago Academy in San Diego.

**Cait Cibulsky** *MAT '16* is an English teacher at David Starr Jordan High School in the Los Angeles Unified School District.

**Maria delos Angeles Cuevas** *MAT '16* is a science teacher in the Centinela Valley Union High School District in Hawthorne, Calif.

**Theresa Daniels** *MAT '16* is an adult ELL teacher in the MSD Warren Township in Indianapolis.



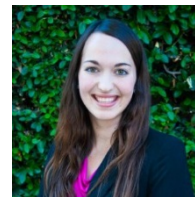
**Lawrence Daves** *ME '16* is a program coordinator for sorority and fraternity life at Loyola Marymount University.



**Airies Davis** *Edd '16* is a chief consulting officer at EtiKID Academy LLC in Los Angeles.

**Priscilla De Lara** *ME '16* is an academic advisor and transfer student specialist at Cal State Fullerton.

**David Dooley** *Edd '16* is principal of Ocosta Elementary School in the Ocosta School District in Westport, Wash. The K-6 school has approximately 350 students.



**Claire Eckenrode** *ME '16* is the assistant director for orientation at University of Maryland, Baltimore County.

**Jamie Emerson** *MAT '16* is an English teacher at Chandler Unified School District in Arizona. She is



currently teaching 10th and 12th grade on-level and inclusion classes.

**Salman Farooq** *MFT '16* is an outpatient therapist at Hathaway-Sycamores Child & Family Services in Los Angeles.



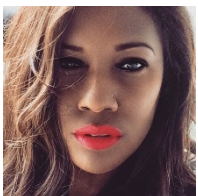
**Brittnee Gauthier** *MFT '16* is a mental health therapist at the Personal Involvement Center, Inc. in Los Angeles.

**Rebecca Gaynon** *MAT '16* is a language arts teacher in the South San Francisco Unified School District.

**Diana Gongora** *MAT '16* is a teacher at Sal Castro Middle School in Los Angeles. She teaches 8th grade US history and AVID.

**Nathan Goodly** *Edd '16* is a special education program specialist in the Lennox School District in California.

**Michael Gorse** *ME '16* is the center supervisor at the LGBT Resource Center at USC. He supports and empowers all marginalized students, leads a staff of LGBT-identified individuals, designs and facilitates high-impact programs and events in response to the needs of students, provides diversity, equity, inclusion trainings for various campus groups, works closely with both internal and external partners and organizes the annual Models of Pride LGBT youth conference.

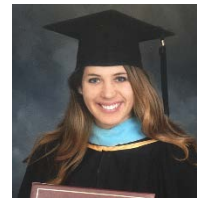


**Melanie Harrison** *MAT '16* is the youth outreach specialist at the nonprofit organization Reach Out in Upland, Calif. She is the facilitator of a two-year grant-funded program by the San Bernardino County Work

Force Development called the Health Occupations Training program. She will reform and prepare out-of-school youth ages 16-24 for healthcare careers who have barriers such as homelessness, single-parent, pregnant youth, youth with a criminal background and youth with basic skill deficiency. She will be teaching a curriculum that teaches the enrolled youth soft skills, résumé preparation, dressing for success,

online presence appropriateness, financial literacy and other skills and tools needed to get into a certificate program and/or college program that helps them become employable.

**Heather Kagan Ward** *MFT '16* is the senior marketing manager at UCLA Extension.



**Eva Kram** *MFT '16* is a mental health clinician at Community Research Foundation in Chula Vista, Calif., where she provides therapy and case management services.

**Anthony Kroetsch** *MAT '16* is an English language instructor at EPIK in South Korea.

**Andrew Law** *MAT '16* is a math teacher at Rohertson High School in Fremont, Calif.

**Sharon Lee** *MAT '16* is a teacher and head of the ESL program at Prep Tech in Tucson, Ariz.

**Yee Leung** *MAT '16* is a sixth grade history teacher at John Muir Middle School in the San Leandro Unified School District in California.



**Ryan Locke** *MAT '16* is an instructor at the Maui Language Institute in Kahului, Hawaii.



**Oscar Lugo** *MAT '16* is a teacher and mentor at Fusion Academy in Los Angeles. He currently teaches English and Spanish to middle and high school students. At Fusion Academy, all instruction is

individualized and meets the needs of learners who do not flourish in traditional classroom settings.

**Natalie Luna** *ME '16* is a career counselor and employer services coordinator at California Lutheran University.

**Sara Martin** *MAT '16* is a teacher in the Sacramento City Unified School District.

**Adaly Martinez** *ME '16* is a disability services coordinator at Cal Poly Pomona.

**Kelsey McKovich** *MAT '16* is a teacher at Oxford Preparatory Academy in Mission Viejo, Calif. She is currently teaching third grade.



**Megan Mekjian** *MAT '16* is a drama teacher at the East Harlem School at Exodus House in New York. This is an independent middle school (grades 4-8) for low-income students. She also directs a musical

for each grade, coaches fitness classes and runs a choir club.

**Alberto Morales Jr.** *Edd '16* is an executive officer for the Center for Excellence in Disaster Management and Humanitarian Assistance for the US Pacific Command in Hawaii. He is the primary element of the senior administrative team to facilitate the director's initiatives and objectives to the disaster management and humanitarian assistance community.

**Anthony Nesbit** *MAT '16* is an ESL teacher at Craven County Public Schools in New Bern, N.C. He is responsible for creating and delivering lessons based on state and national standards and communicating with parents and teachers about the needs of English language learners.

**Vance Nichols** *Edd '16* will be delivering the first public presentation of findings of his groundbreaking USC Rossier research study, "Schools At Risk: An Analysis of Factors Endangering the Evangelical Christian School Movement in America" on Nov. 21, at the ACSI Professional Development Forum in Costa Mesa, Calif. The study is the first nationwide research into the decade-long phenomenon of Christian school closures across the US. The unexpected downturn represents a crisis of unparalleled proportions in the private school movement's 66-year history. His presentation will include an emergent causal factor connection to Repetitive Inaction Disorder Theory, an organizational leadership theory that Vance developed at USC Rossier and introduced publicly in February 2015. Vance, head of school at Alta Loma Christian School in Rancho Cucamonga, Calif., also serves as the chairing commissioner of the ACSI Southern California Regional Accreditation Commission.

**Mia Park** *MAT '16* is a science teacher at Bellflower Unified School District in Lakewood, Calif. She teaches middle school biology.

**Laura Perkowski** *MAT '16* is a fifth grade teacher in the Redwood City School District in California.

**Shaina Philpot** *MAT '16* is a first grade teacher at Sullivans Elementary School, located on Yokosuka Naval Base in Yokosuka, Japan.

**Jasmin Pivaral** *ME '16* is the assistant director of freshman recruitment at UCLA.

**Javis Presley** *MAT '16* is a teacher at Taylor County School System in Butler, Ga., teaching sixth grade earth science.

**Donnie Rafter** *Edd '16*, assistant principal at Beckman High School, has been appointed principal of the school. He began July 1 for the 2016-17 school year. Rafter has worked in education for 14 years – six years in Tustin Unified. He started as a high school math teacher in Irvine and coached girls and boys volleyball. He then joined Foothill High School as an assistant principal. He has served as an assistant principal at Beckman for the past four years. Among his accomplishments, this year Donnie was named Orange County Career Technical Education Administrator of the Year by the Association of California School Administrators, Region 17.

**Melissa Roberson** *MAT '16* is an adult ESL teacher at Elk Grove Unified School District in Sacramento, Calif.



**Fernando Robles** *Edd '16* is a deaf and hard of hearing itinerant educator for the Los Angeles County Office of Education. Fernando provides direct therapeutic services to students with a hearing loss enrolled in K-12 schools throughout the South Bay.

**Henry Romero** *Edd '16* is a middle school principal at Wiltsey IB Middle School, which serves more than 1,100 students, in the Ontario-Montclair School District.

**Allison Ross** *MAT '16* is a third grade teacher at Stephen S. Wise in Los Angeles. This is a private Jewish day school, where she is a co-teaching for her

first year in a third grade classroom. Additionally, she has a leadership role as the USC liaison for training teachers in gifted education.

**Wendy Sanchez MAT '16** is a classroom teacher in the Lawndale School District in California.

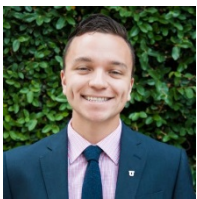
**Jake Sands MAT '16** is a third grade teacher and afterschool instructor for KIPP Illuminar Academy in East Los Angeles.

**Curtis Stimach MAT '16** is a sixth grade teacher at Reef Sunset Unified School District in Avenal, Calif.



**Vanessa Tejada ME '16** is a residential life coordinator at California Institute of Technology in Pasadena, Calif.

**Sade Thompson MFT '16** is a clinician at Uplift Family Services in Los Angeles, which provides community and school-based mental health services for children and families.



**Adam Tuero ME '16** is the manager of regional and engagement programs at the USC Alumni Association.

**Jessika Unterberger MAT '16** is an art teacher in the Oxnard Union High School District.

**Sarah Vendal MAT '16** is a second grade teacher at Rea Elementary School in Newport Mesa Unified School District.

**Alexandra Verheecke (formerly Petek) MAT '16** is a teacher at San Rafael City Schools in California. She is currently teaching ninth grade World Cultures, 10th grade World History SDAIE and 11th grade US History SDAIE.

**Marcos Villanueva ME '16** is a student programs coordinator at USC Upward Bound.

**Johnnisha Youngblood MAT '16** is an associate teacher at Curtis School Foundation.

**Ziwei Yu MFT '16** is an outpatient clinician at McKinley Children's Center in San Dimas, Calif.



**Looking to save time and still manage to keep up with news impacting your work?**

**The Rossier Roundup** is a bi-monthly email digest with links to interesting articles impacting various segments within the field of education, designed to help busy alumni keep up with news and trends. Alumni can subscribe to targeted editions based on the following news they want to receive:

- Higher Education Administration
- Higher Education Teaching & Research
- K-12 Teaching
- K-12 Administration
- MFT
- TESOL

Sign up at <http://rossiercareers.usc.edu/the-rossier-roundup/>

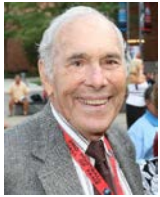
## Rossier on the Road: Hawaii, Dallas and San Francisco

Throughout the year, Rossier organizes several events designed to provide alumni with the opportunity to reconnect with the school and fellow alumni. Rossier has been busy traveling across the country over the past few months. We visited Hawaii and hosted an event at the Waikiki Yacht Club on Saturday, July 23. To kick off the Labor Day weekend and the USC vs. Alabama football game, we hosted an event in Dallas on September 1. Most recently, we visited San Francisco on September 15.

Stay tuned for future alumni events by checking out our calendar [here](#).



## In Memorium



**Richard Cordano '50 MS '54 PhD '70**, known affectingly as “Dr. Cee” by his former teachers and students, was 94 years young, leaving a legacy of integrity, charm and the highest level of professionalism.

Born in Los Angeles, Richard spent all of his schooling in the Los Angeles Unified School District. This tenure in public education marked a turning point in his life as he would return to education first as a teacher and later as an administrator. Marrying Dolly, his wife, was one of the greatest joys of his life. His marriage was a true partnership lasting 49 years.

Richard was a proud World War II veteran, having served his country as a Chief Petty Officer in the U.S. Navy. Aboard the USS Capricornus AKA 57, he was in every major battle in the Pacific. From this experience, he gained superb leadership and people skills, expertise that would serve him well in his professional life. Throughout his career, he maintained contact with his shipmates, returning to annual reunions sponsored by the USS Capricornus Association. Using the GI Bill, Richard first went to Pasadena City College and then transferred to his beloved USC where he earned his bachelor's, master's and doctorate degrees.

He began his career as a teacher in the Pasadena Unified School District and then transferred to the Arcadia Unified School District as Principal of Arcadia High School from 1963–1985. To celebrate his legacy as an outstanding principal, friend and colleague, Richard was celebrated recently by his former teachers and students by naming a room in his honor in the Arcadia Performing Arts Center.

Not ready to fully retire, Richard returned to work for the next 12 years as a district manager of the California State Lottery in one of the regional offices.

Richard is survived by his loving daughter, Debbi, sister, Frances Ondell, two nephews, Joseph and Christopher Ondell and countless cousins.



**Betty du Chemin Frey '44** was a long time resident of Manhattan and Hermosa Beach. She passed away quietly, July 8, in her home in Newport Beach.

Betty du Chemin Frey was born in Denver Colorado in 1923. She was the daughter of William Eugene du Chemin, a filmmaker from Prince Edward Island, Canada. Her mother was Audrey du Chemin, former editor of the “Loma Linda Alumni Journal”, and a correspondent and news editor for the “El Monte Herald” and “Los Angeles Times”. An avid writer and educator, Betty graduated as Valedictorian of the class of 1940 from Huntington Park High School. She received numerous writing awards, including the Los Angeles Times Young Writers Award.

She attended USC Class of 1944, on an academic scholarship and received a BA in education, followed by a MA in education from Pepperdine. She was honored to teach English to eager students at Carson High School until her retirement in 1990. Betty was married to Dick Frey, USC '48, who predeceased her in 2005. They moved to the beach cities after World War II and lived in Manhattan Beach and Hermosa Beach, where they raised three daughters. Her loving daughters, JoAnne Perkins, Carol Frey, USC Keck School of Medicine '80, and Jeannine Frey Culp, USC Marshall '84, survive Betty. Her grandsons, James Perkins, Scott Perkins, USC '04, Michael Perkins, Jake Feder, Rick Feder, Matt Culp and Richard Andrew Culp, will miss her intellect, conversation, perception, accurate advice and love.

Betty will be interred with her husband of over 50 years, Dick Frey, at Green Hills Mortuary in Rancho Palos Verdes.

